

SA15020

Aluminiumnitrogenmembrane module



Nominal Outlet Flow Rate

| Inlet Pressure | | Purity (Remaining Oxygen Content) | | | | | | | | | | | |
|----------------|--------|-----------------------------------|------|--------------|------|--------------|------|--------------|------|--------------|------|--------------|-------|
| | | 99.5% (0.5%) | | 99.0% (1.0%) | | 98.0% (2.0%) | | 97.0% (3.0%) | | 96.0% (4.0%) | | 95.0% (5.0%) | |
| bar(g) | psi(g) | m3/hr | cfm | m3/hr | cfm | m3/hr | cfm | m3/hr | cfm | m3/hr | cfm | m3/hr | cfm |
| 4.0 | 58.0 | 17.0 | 10.0 | 25.0 | 14.7 | 36.0 | 21.2 | 47.0 | 27.7 | 57.0 | 33.5 | 70.0 | 41.2 |
| 5.0 | 72.5 | 23.0 | 13.5 | 33.0 | 19.4 | 49.0 | 28.8 | 66.0 | 38.8 | 82.0 | 48.3 | 93.0 | 54.7 |
| 6.0 | 87.0 | 29.0 | 17.1 | 43.0 | 25.3 | 63.0 | 37.1 | 83.0 | 48.9 | 102.0 | 60.0 | 120.0 | 70.6 |
| 7.0 | 101.5 | 37.0 | 21.8 | 53.0 | 31.2 | 78.0 | 45.9 | 100.0 | 58.9 | 125.0 | 73.6 | 154.0 | 90.6 |
| 8.0 | 116.0 | 44.0 | 25.9 | 62.0 | 36.5 | 90.0 | 53.0 | 117.0 | 68.9 | 144.0 | 84.8 | 178.0 | 104.8 |
| 9.0 | 130.5 | 49.0 | 28.8 | 72.0 | 42.4 | 103.0 | 60.6 | 133.0 | 78.3 | 165.0 | 97.1 | 216.0 | 127.1 |

m³ reference to standard conditions, 20°C, 1013 mbar(a) and 0% relative water vapour pressure.
For performance figures at other purities and and/or pressures, please contact Avilo.

Temperature Correction Factors

| °C | °F | 99.5% (0.5%) | 99.0% (1.0%) | 98.0% (2.0%) | 97.0% (3.0%) | 96.0% (4.0%) | 95.0% (5.0%) |
|-------|-------|--------------|--------------|--------------|--------------|--------------|--------------|
| 5.0 | 41.0 | - | - | 0.90 | 0.90 | 0.90 | 0.90 |
| ≤10.0 | 50.0 | - | - | 0.95 | 0.95 | 0.95 | 0.95 |
| 20.0 | 68.0 | 1.00 | 1.00 | 1.00 | 1.00 | 1.00 | 1.00 |
| 30.0 | 86.0 | 1.00 | 1.03 | 1.05 | 1.05 | 1.05 | 1.05 |
| 40.0 | 104.0 | 1.0 | 1.05 | 1.10 | 1.10 | 1.10 | 1.10 |
| 50.0 | 122.0 | 1.0 | 1.05 | 1.10 | 1.10 | 1.15 | 1.15 |

Product Image



Operation Parameters

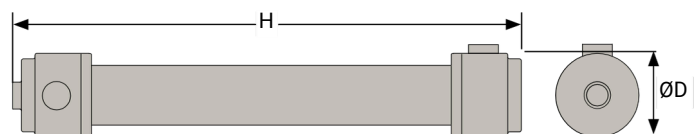
| | | |
|-------------------------------|------------------------------|--------------|
| Minimum Inlet Air Quality | ISO 8573-1: 2010 Class 2.4.1 | |
| Minimum Operating Pressure | 4.0 bar(g) | 58.0 psi(g) |
| Maximum Operating Pressure | 9.0 bar(g) | 130.5 psi(g) |
| Minimum Operating Temperature | 5.0°C | 41.0°F |
| Maximum Operating Temperature | 50.0°C | 122.0°F |
| Maximum Pressure Drop | 0.2 bar(g) | 2.9 psi(g) |

Material & Connections

| | |
|----------------------|-----------------------------|
| Material | Aluminium |
| Coating | Powder Coated (Quartz Grey) |
| Compressed Air Inlet | G2½" |
| Exhaust | 100 mm ØD |
| Nitrogen Outlet | G2½" |

Weight & Dimensions

| | | |
|----------|---------|-----------|
| Weight | 46.0 kg | 101.4 lbs |
| Height | 1740 mm | 68.5" |
| Diameter | 100 mm | 3.94" |



NITROGEN MEMBRANE PART NUMBER CONFIGURATION

| Configurator | | | | | | | |
|--------------|---------|------------|--------|--------------|--------|-------------|---------|
| Model | Prefix | Purity (1) | Prefix | Pressure (2) | Prefix | Housing (3) | Suf fix |
| ST304 | ST304 | 95.0% | 950 | 5.0 bar(g) | 05 | ST304 | A |
| DT304 | DT304 | 96.0% | 960 | 6.0 bar(g) | 06 | DT304 | A |
| TT304 | TT304 | 97.0% | 970 | 7.0 bar(g) | 07 | TT304 | A |
| ST504 | ST504 | 98.0% | 980 | 8.0 bar(g) | 08 | ST504 | A |
| ST604 | ST604 | 99.0% | 990 | 9.0 bar(g) | 09 | ST604 | A |
| DT604 | DT604 | 99.5% | 995 | 10.0 bar(g) | 10 | DT604 | A |
| TT604 | TT604 | | | 11.0 bar(g) | 11 | TT604 | A |
| SA604 | SA604 | | | 12.0 bar(g) | 12 | SA604 | A |
| ST606 | ST606 | | | 13.0 bar(g) | 13 | ST606 | A |
| TT606 | TT606 | | | | | TT606 | A |
| ST608 | ST608 | | | | | ST608 | A |
| SA708 | SA708 | | | | | SA708 | A |
| ST1506 | ST1506 | | | | | ST1506 | A |
| DT1506 | DT1506 | | | | | DT1506 | A |
| ST1508 | ST1508 | | | | | ST1508 | A |
| DT1508* | DT1508 | | | | | ST1508SS | S |
| SA1508 | SA1508 | | | | | DT1508* | A |
| ST6010 | ST6010 | | | | | DT1508SS | S |
| SA15015 | SA15015 | | | | | SA1508 | A |
| NFM-100 | NFM-100 | | | | | SA1508SS | S |
| ST15020 | ST15020 | | | | | ST6010 | A |
| SA15020 | SA15020 | | | | | SA15015 | A |
| | | | | | | NFM-100 | S |
| | | | | | | ST15020 | A |
| | | | | | | SA15020 | A |

(1) Check product information page for available purities.

(2) Check product information page for maximum operating pressure

(3) Check product information page for correct housing material.

*For DT1508 9-13 bar (130.5-189 psig) the last letter in the part number is C not A.

The inlet pressure and purity specified within the part number configurator is used as a point of reference for the factory to carry out a full performance test prior to shipment. The membrane module still has the capability to operate at alternative inlet pressure and/or purities within its performance range.

Example:

| | Flow Rate | Purity | Pressure | Housing Material | Suf fix |
|--------------|---|---------|------------------|------------------|---------|
| Requirement: | 100m³/hr | @ 95.0% | 7.0 bar(g) inlet | Aluminium | 00A |
| Selection: | 111.1m³/hr = SA15015 | 950 | 07 | A | |
| Part Number: | S A 1 5 0 1 5 - 9 5 0 - 0 7 - A - 0 0 A | | | | |



Avilo Stikstof en Persluchtssystemen B.V.
part of interfilter group



www.avilo.nl
© 2026 Parker Hannifin Corporation

