

# INTERPHASE™ SS SEPARATOR ELEMENT

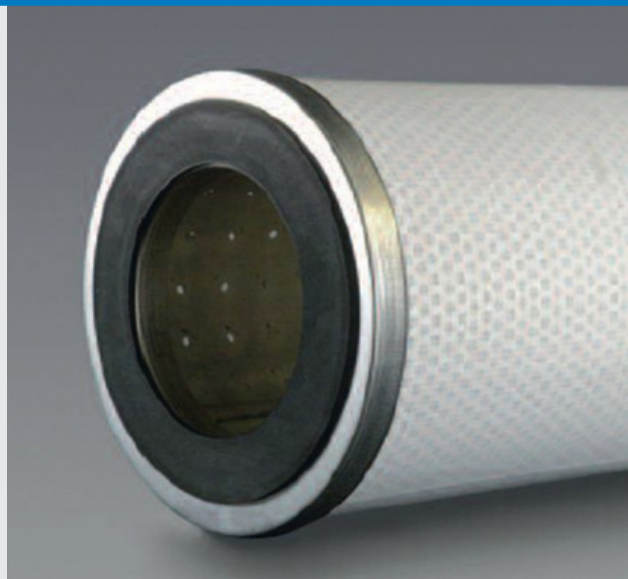
Feature: Cleanable

## APPLICATIONS

- **Industrial:** chemicals, resins, solvents, hydraulic oils and lubricating oils.
- **Petroleum refining:** hydrocarbon feed stocks, fuels, crude, condensates and distillates.
- **Pipelines and petroleum terminals:** diesel, gasoline, kerosene, LNG and LPG.
- **Power generation:** turbine lubricating and hydraulic oil.
- **Pulp and paper:** lubricating and hydraulic oil.
- **Electricity transmission:** transformer oils.

## FEATURES

- **Media:** hydrophobic synthetic mesh.
- **Core:** steel (galvanized or tin plated).
- **End caps:** steel (galvanized or tin plated).
- **Gasket:** buna-n.
- **Options:** Gasket materials, adhesives



MODEL	OUTSIDE DIAMETER		INSIDE DIAMETER		LENGTH	
	INCHES	MM	INCHES	MM	INCHES	MM
SP611	6	152	3,5	89	11 1/4	286
SP614	6	152	3,5	89	14 1/2	368
SP616	6	152	3,5	89	16 1/4	413
SP622	6	152	3,5	89	22 1/4	565
SP629	6	152	3,5	89	28 3/4	730
SP633	6	152	3,5	89	33 1/4	845
SP636	6	152	3,5	89	36	914
SP640	6	152	3,5	89	40	1016
SP644	6	152	3,5	89	44	1118
SP648	6	152	3,5	89	48	1219
SP656	6	152	3,5	89	56	1422

## SPECIFICATIONS

Maximum temperature: 240 °F/ 116 °C.

Recommended pressure drop for change: 15 psid / 1.7 bar\*.

Maximum  $\Delta P$ : 75 psid / 1.72 bar\*.

Micron size: 5.25  $\mu$ .

pH range 5-9.

\* Maximum  $\Delta P$  may be limited by the supplier of the filter housing.