

CARBON CARTRIDGES AND FRAMES

Perforated cylinders filled with activated carbon

APPLICATION

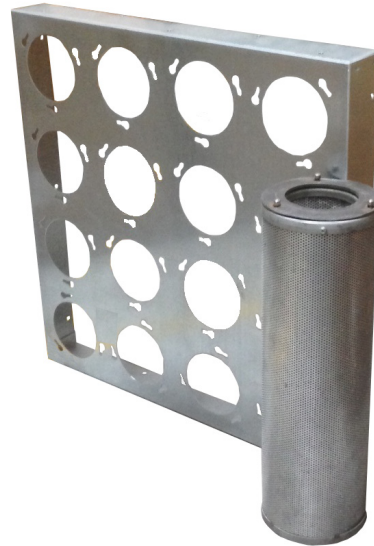
- Removing odors and gases

BENEFITS

- Compact and beneficial
- The cartridges are easy to place on the frame because of the bayonet connection
- Solid execution
- Cartridges can be filled with various types of filter media.

SPECIFICATIONS

- Cartridge: Double-walled housing made of perforated galvanized steel. Also available in stainless steel and plastic.
- Frame: Galvanized steel or RVS.
- Medium: standard activated carbon.
Impregnated carbon or chemical filter medium on request.
- Seal: Flat neoprene
- Max. temperature carbon: 50gr. Celsius
- Max. relative air humidity: 70% for carbon



ARTICLE NR.	DESCRIPTION	MATERIAL	LENGTH (A) MM	DIAMETER (C) MM	THICKNESS CARBON BED (B) MM	WEIGHT CARBON STUFFING KG	RECOMMENDED MAX. FLOW M ³ /U	ΔP PA
08210	Carbon cart. type 1000	steel	250/15	145	15	0,7	45	20
08340	Carbon cart. type 1500	steel	250/25	145	25	1,1	75	45
08212	Carbon cart. type 2000	steel	455/15	145	15	1,3	95	25
08213	Carbon cart. type 2600	steel	455/25	145	25	2,1	156	75
08342	Carbon cart. type 3500	steel	600/25	145	25	3	200	115

ARTICLE NR.	DESCRIPTION	MATERIAL	WIDTH (A) MM	HEIGHT (B) MM	DEPTH (C) MM	NUMBER OF CARTRIDGES PER FRAME
08214	Carbonframe 610x610	steel	610	610	75	16
08215	Carbonframe 508x610	steel	508	610	75	12
08216	Carbonframe 305x610	steel	305	610	75	8
08217	Carbonframe 305x305	steel	305	305	75	4