

DELTRIBOX

Aerodynamic steel housing fitted with self-supporting carbon panels

APPLICATIONS

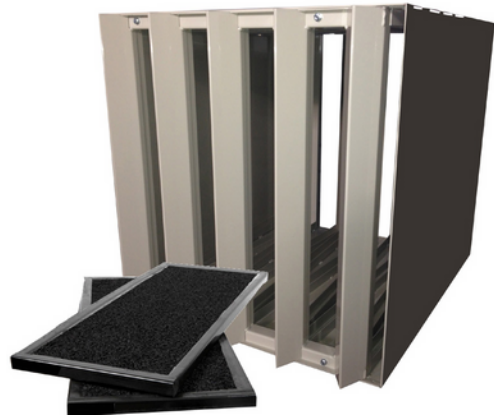
- Removing odors and gases

ADVANTAGES

- Easily interchangeable self-supporting bonded carbon panels
- Solid steel housing with PU coating for a long lifespan
- Very low pressure drop at high air flow thanks to aerodynamic shape of the intake grille
- Bypass due to the settling of loose carbon pellets is a thing of the past
- After use, the carbon panels are completely combustible
- No loose carbon dust thanks to the bound medium

SPECIFICATIONS

- Housing: PU coated steel
- Carbon panels: Bonded carbon pellets processed into self-supporting panels
- Max. continuous temperature: 70 degrees Celsius
- Max. relative humidity: 50%



DESCRIPTION	WIDTH (A) MM	HEIGHT (B) MM	DEPTH (C) MM	WEIGHT INCLUDING CARBON KG	WEIGHT CARBON KG	FLOW RATE M3/H	ΔP INITIAL
Deltribox 1/1	610	610	688	78,6	35	3400	93
Deltribox 1/2	305	610	688	47	17,5	1700	93