

KG12 MODULES

Plastic filter modules filled with molecular filter medium

APPLICATIONS

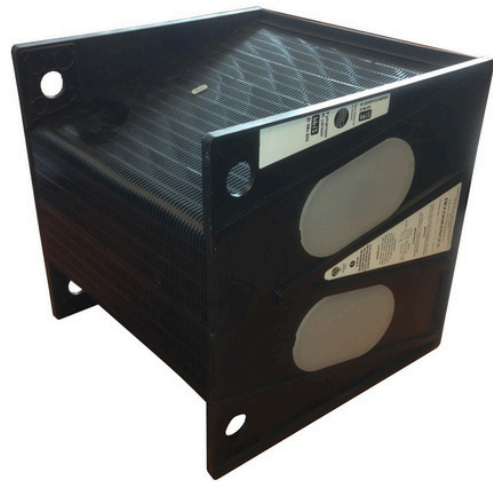
- Capturing odors and gases

BENEFITS

- Robust and high-quality construction
- High airflow capacity with low resistance
- Fully recyclable housing
- Available with various types of filling, tailored to the nature of the contaminants to be captured
- Optimal filtration performance thanks to a thick carbon bed

SPECIFICATIONS

- Supplied in pairs for a width of 600mm
- Volume: 30 liters per pair
- Weight: Depends on the applied medium. The specific mass can vary by medium type
- Material: 100% recyclable plastic or steel
- Carbon bed thickness: 75mm
- Max. continuous temperature: 55°C
- Max. relative humidity: 20-99%, depending on the applied filter medium



DESCRIPTION	WIDTH (A) MM	HEIGHT (B) MM	DEPTH (C) MM	AIRFLOW M3/H	CONTACT TIME SEC	INITIAL ΔP
KG12 module	296	296	298	80	0,64	55
KG12 module	296	296	298	160	0,32	83
KG12 module	296	296	298	213	0,241	110
KG12 module	296	296	298	240	0,213	128
KG12 module	296	296	298	320	0,16	200
KG12 module	296	296	298	400	0,128	275
KG12 module	296	296	298	480	0,107	370