

LINE SERIES DUST COLLECTOR

JET-PULSE COMPACT PANEL TYPE

PLUG & PLAY

LINE Series Jet-Pulse Dust Collector takes up less place than its compact design. It is a plug&play device that contains all accessories on its own.

PANEL FILTER ELEMENT

In the LINE Series Jet-Pulse Dust Collector high efficient and long-lasting panel filter elements are used. Depending on the application, there are several filter media options.

DURABLE & LEAK-PROOF

Side and upper doors of cabin, makeup profile, chassis and carrying legs are produced with sufficient plate thickness and leak-proof is ensured by press inflection unifying with a nut.

SILENT

LINE Series Jet-Pulse Dust Collector enhances the air quality of your factory without reasoning noise pollution thanks to its specially designed deadening ventilator and its cabin.

AUTO CLEANSING

In the Jet-Pulse filter units, compressed air cleaning works on the basis of differential pressure. In this way, the filters are cleaned only when necessary and the compressed air consumption is reduced.

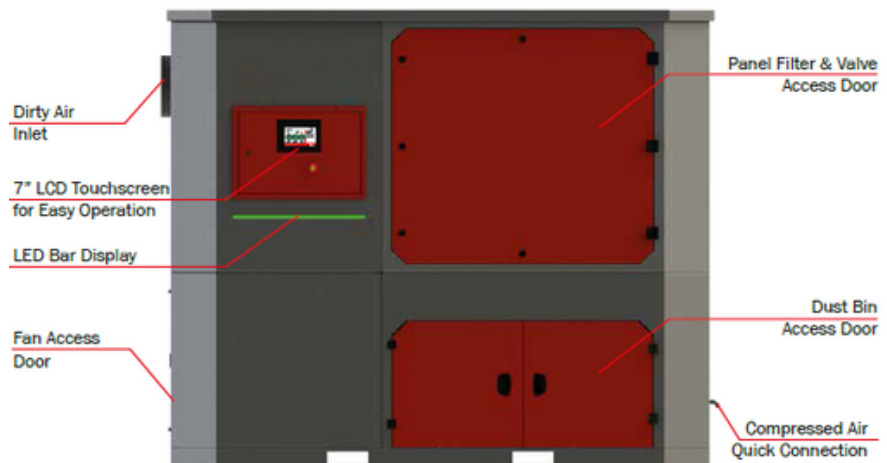
EASY MAINTENANCE

LINE Series Jet-Pulse Dust Collector decreases your time and labor cost thanks to its panel filter elements and custom-engineered dust bin.



APPLICATIONS

- Metalworking
- Plasma/Laser Cutting
- Pharmaceutical
- Powder Coating
- Food
- Welding



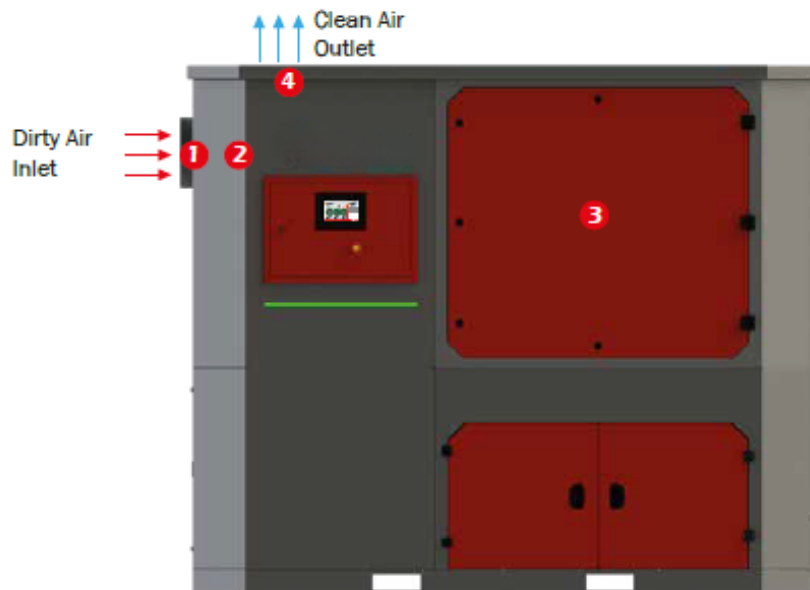
LINE SERIES DUST COLLECTOR

JET-PULSE COMPACT PANEL TYPE

HOW IT WORKS?

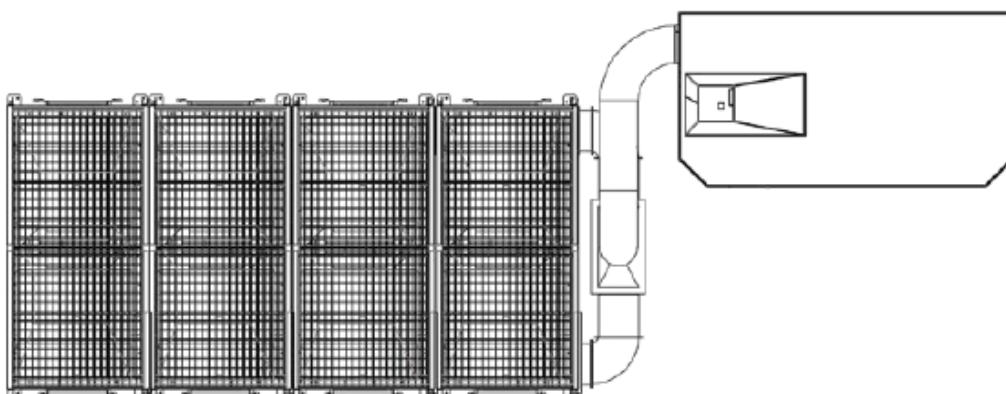
Plug & play device

LINE series Jet-Pulse Panel Filter Units are able to be shipped as pre-installed due to its special designed dimensions. This design advancement allows us to pre-set each start-up settings and all you need to plug all air connections, electrical connections and start running your device.



- 1** Dirty air comes into inlet with proper sized duct.
- 2** Integrated spark arrestor protect cartridge filters and filter unit from abbrasive particle and reduces fire risk by capturing sparks.
- 3** Dirty air is filtering by high efficienct panel filters.
- 4** Clean air released to the ambient via super silent fan

SAMPLE INSTALLATION



FEBRUARY 2024

LINE SERIES DUST COLLECTOR

JET-PULSE COMPACT PANEL TYPE - ACCESSORIES

Radical fan

Targeted to satisfy requested flow and pressure, centrifuge type, conforming the standards and with its' direct drive motor its' produced to work quite and vibration free. Fan motor are made by steel as standard and balanced dynamically and statically on specialized plants.



Panel filter

100% Spunbond Polyester with ePTFE membrane filters(H13/H14 class) are used as standard in LINE series. Thanks to its special pleating technique, it provides high performance even under the most difficult conditions. (For more details page 4)



Pulse-valve and header tank

Pulse Valves are made by aluminum cast block and 1" sized. They perform with 24V DC standard voltage as standard. Air tank is produced conforming to compressed container technique and adequate to store the air between two valves.



Compressed air regulator

It regulates the pressure of the compressed air coming from compressor and ensures it has been forwarded to air tank as dry, thus the filter cleaning pressure is kept under control and safety of filters is guaranteed.



Control panel & dP sequencer

The panel containing thermal switch controlling ventilator engine, contactor, engine protection relay, working/warning lights, emergency stop button and fan start/stop button. dP controlled sequencer is integrated to the control panel.



Dust bin

Dust bin accumulate the dust filtered by cartridge filters. Dust bins are easy to plug and remove thanks to their brand new fitting equipment. Also LINE series dust collectors contains dust bin ramp as standard to remove the dust bin more easily.



Intergrated silencer box

Specially designed silencer box reduces noise of LINE series dust collector and make them run super silent.

Intergrated spark arrestor

Integrated spark arrestors are designed to capture risky sparks and reduce fire risk of dust collector.

LINE SERIES DUST COLLECTOR

JET-PULSE COMPACT PANEL TYPE - ACCESSORIES

OPTIONAL ACCESSORIES

LED bar

Special design led bar in LINE series Jet-Pulse Panel Filter Units shows 3 colors for running/stopping and faults. The led bar, which gives the unit a stylish appearance, is also designed to attract the attention of the operator.



7" LCD touchscreen panel

7"LCD touch panel is PLC controlled and allows easy operation of many operations and monitoring of sensors on the device. It provides fast adaptation to industry 4.0 platforms thanks to its wide range communication protocols.



EX-PROOF ACCESSORIES

Explosion vent

ATEX certificated, stainless steel explosion vents are selected with required calculations



Pilot box and ex-proof coils

Remote box keep electrical equipments of pulse valves out from explosive and dangerous areas. It also prevents electronic equipments from harsh environment.



Ex-proof fan & motor

ATEX certificated ex-proof motor and fan are used, which are suitable for different capacity requirements



PANEL FILTER

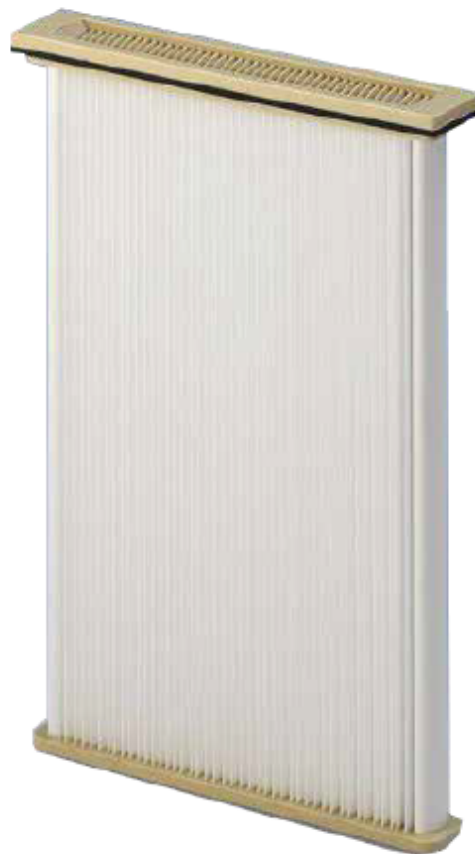
JET-PULSE COMPACT PANEL TYPE DUST COLLECTOR

- According to DIN EN 60335-2-69 standards, in 0,2-2 μ sized M-Class particles it has a filter efficiency up to 99,99%.
- Easy filter replacement from clean air side without facing any contaminated air.
- It provides extended use without losing filtration efficiency.

In the LINE series jet-pulse dust collector, highly efficient 100% non-woven spunbond polyester with ePTFE membrane, H13 class filter media is used as standard. With its' superior pleating technique it's guaranteed the pleating sizes have been equal and better filter cleaning is ensured. Due to its' plate design, it can be assembled and disassembled easily.

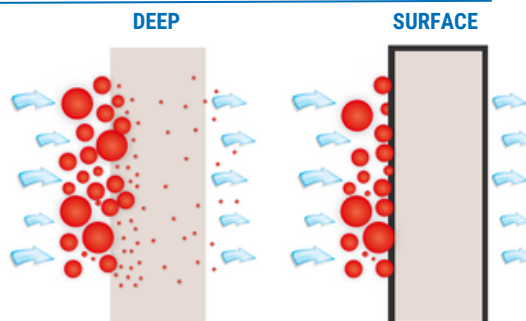
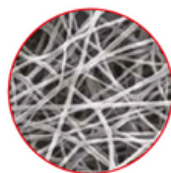
Interfilter engineers offer the most suitable filter material for all applications and dust types. Some filter materials considering factors such as density of dust, humidity proportion, if the dust has a potential to be loaded statically and so on are as follows;

- polyMIGHT 55: %100 spunbond non-woven polyester
- polyMIGHT HO 55: Hydrophobic coating over polyMIGHT 55
- polyMIGHT ALU: Aluminium coating over polyMIGHT 55 (Antistatic)
- polyMIGHT PTFE 65: ePTFE membrane over polyMIGHT 55 (H13 efficiency)
- polyMIGHT ALU PTFE: ePTFE membrane over polyMIGHT ALU (Antistatic)



SURFACE FILTRATION

On the contrary to traditional filters, filters made by non-woven polyester performs the filtration not in the filter but on the surface. Therefore;



- The penetration of dust inside the filter is prevented and filter life is extended
- Less differential pressure is produced and required compressed air consumption for cleaning process is decreased
- Higher filtration efficiency is provided

LINE SERIES DUST COLLECTOR

JET-PULSE COMPACT PANEL TYPE

Industry 4.0 - quick connection options

LINE Series Jet-Pulse Compact Panel Filter units are optionally equipped with a special control unit, which provides fast integration to industry 4.0 platforms. Thanks to their special software and hardware, these controllers can be connected directly to industry 4.0 platforms without the need for an extra gateway device.



Easy connection to predictive maintenance softwares

Sensors on the filter units and the new generation control panel are designed to connect quickly to 3rd party software and hardware. In this way, even if you do not purchase B-Cloud service, you can provide fast integration to your own industry 4.0 application.

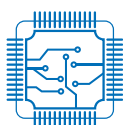
Cloud platform: B-cloud

You can either quickly connect devices to your own industry 4.0 platform or use advanced cloud platform; B-Cloud. You will have following privileges by being a part of B-Cloud service;



Be a part of BIG DATA

All devices that purchase Bomaksan B-Cloud service collect their data on the same platform. In this way, the data of your units are processed together with the data of all devices connected to Bomaksan B-Cloud service.



Get the whole experience on the first run

The devices connected to B-Cloud system contain the experiences of other machines from the moment they first work. In this way, the most efficient working conditions will be achieved the first run.



Feel the power of continuous improvement

Data from devices connected to the B-Cloud system provide information on performance improvements. This information is used to improve the performance of all the devices connected to the B-Cloud service.