

PKF SERIES DUST COLLECTOR

JET-PULSE MODULAR CARTRIDGE

MODULAR

PKF Jet-Pulse Dust Collector has a modular structural design. Thus when you need to increase your filter capacity, you can directly add a PKF device to your system without replacing the old one.

FLEXIBILITY

PKF Jet-Pulse Dust Collector may be re-designed by Bomaksan engineers by considering your factories settlement plan and provides the most suitable solution.

DURABLE & LEAK-PROOF

Side and upper doors of cabin, makeup profile, chassis and carrying legs are produced with sufficient plate thickness and leak-proof is ensured by press inflection unifying with a nut.

EASY INSTALLATION

Thanks to it's special design, PFK Jet-Pulse Dust Collector is shipped to your factory as ready to be setup and easily put to use.

AUTO CLEANSING SYSTEM

Thanks to it's high efficient automatic cleaning system designed by Interfilter engineers as part of an R&D project, while the consumption of compressed air is decreasing, the life and performance of filters increases.

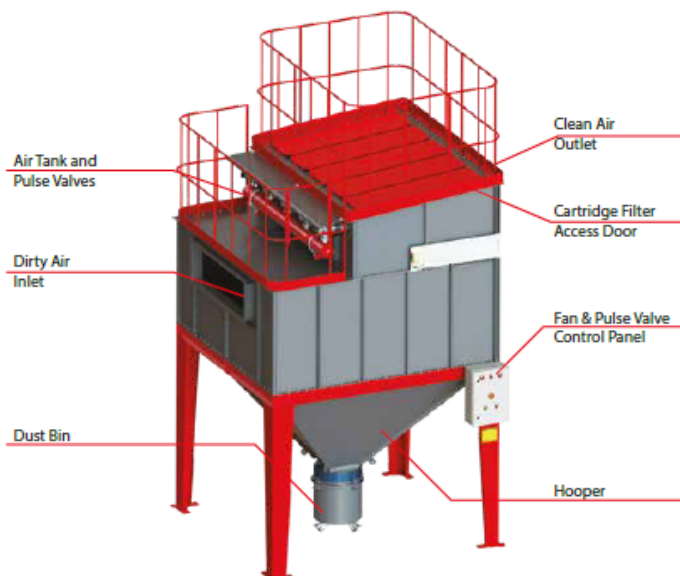
EASY MAINTENANCE

PKF Jet-Pulse Dust Collector gives you the chance to change dust bin discharge and filter easily due to its ergonomic design.



APPLICATIONS

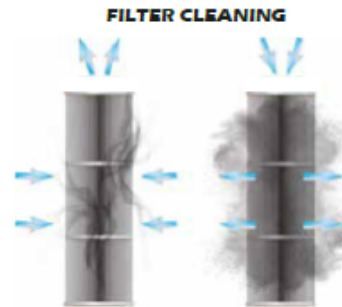
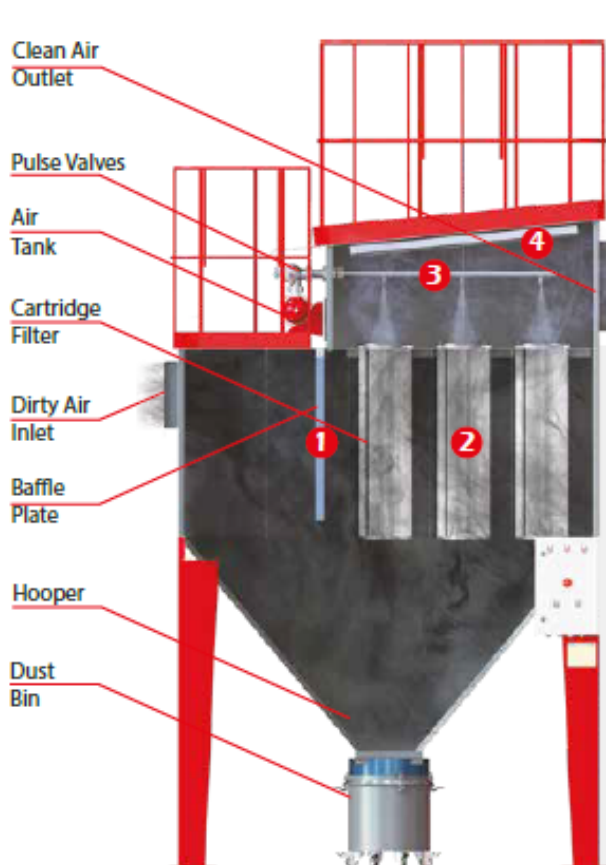
- Metalworking
- Plasma/Laser Cutting
- Pharmaceutical
- Powder Coating
- Food
- Welding



PKF SERIES DUST COLLECTOR

JET-PULSE MODULAR CARTRIDGE

HOW IT WORKS?



- 1** Heavy particles carried by dirty air (such as spark, big and abrasive particles and so on) are directed to bunker via flapper.
- 2** Light particles in dirty air rise in filter cabin and are hold by cartridge filter.
- 3** Cartridge filter is cleaned by pulse valves with compressed air, after differential pressure sensitive pulse valve controller detects the pollution level of filters.
- 4** Clean air coming from cartridge filters is released to indoor or atmosphere.

SAMPLE INSTALLATION



FEBRUARY 2024

PKF SERIES DUST COLLECTOR

JET-PULSE MODULAR CARTRIDGE - ACCESSORIES

Radical fan

Targeted to satisfy requested flow and pressure, centrifuge type, conforming the standards and with its' direct drive motor its' produced to work quite and vibration free. Fan motor are made by steel as standard and balanced dynamically and statically on specialized plants.



Cartridge filter

80% Cellulose 20% Polyester blend media with nanofiber coated cartridge filters (F9 Class) are used as standard in ECO series. Thanks to the special PLEAT-LOCK pleating technique, pleat spacing is always equal. (For more details page 4)



Pulse-valve and air tank

Pulse Valves are made by aluminum cast and 1½" sized. They perform with 24V DC standard voltage. Air tank is produced conforming to compressed container technique and adequate to store the air between two valves.



Sequencer (dP control)

It analyzes differential pressure occurs due to pollution of filters digitally and controls pulse valves. Covered with IP 65 class, made by ABS, water- and dust-proof case.



Fan control panel

The panel containing thermal switch controlling ventilator engine, contactor, engine protection relay, working/warning lights.



Dust bin

Dust bin accumulate the dust filtered by cartridge filters. Dust bins are easy to plug and remove thanks to their brand new fitting equipment.



CARTRIDGES FILTER

PKF SERIES JET-PULSE MODULAR CARTRIDGE DUST COLLECTOR

- According to DIN EN 60335-2-69 standards, in 0,2-2 μ sized M-Class particles it has a filter efficiency up to 99%.
- Easy filter replacement from clean air side without facing any contaminated air.
- It provides extended use without losing filtration efficiency.

In the PKF series jet-pulse dust collector, highly efficient nanofiber coated, flame retardant, 80/20 cellulose/synthetic, F9 filter media is used as standard. With its' superior PLEAT-LOCK pleating technique it's guaranteed the pleating sizes have been equal and better filter cleaning is ensured. Due to its' plate design, it can be assembled and disassembled easily.

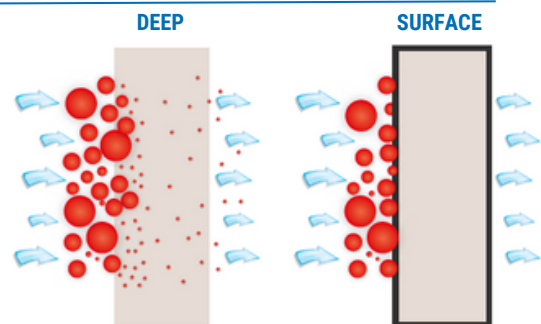
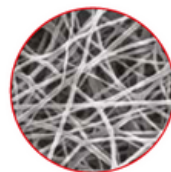
Interfilter engineers offer the most suitable filter material for all applications and dust types. Some filter materials considering factors such as density of dust, humidity proportion, if the dust has a potential to be loaded statically and so on are as follows;

- polyMIGHT 55: %100 spunbond non-woven polyester
- polyMIGHT HO 55: Hydrophobic coating over polyMIGHT 55
- polyMIGHT ALU: Aluminium coating over polyMIGHT 55 (Antistatic)
- polyMIGHT PTFE 65: ePTFE membrane over polyMIGHT 55 (H13 efficiency)
- polyMIGHT ALU PTFE: ePTFE membrane over polyMIGHT ALU (Antistatic)
- nanoBLEND FR: %80 Cellulose %20 Polyester blend with nanofiber coating



SURFACE FILTRATION

On the contrary to traditional filters, filters made by non-woven polyester performs the filtration not in the filter but on the surface. Therefore;

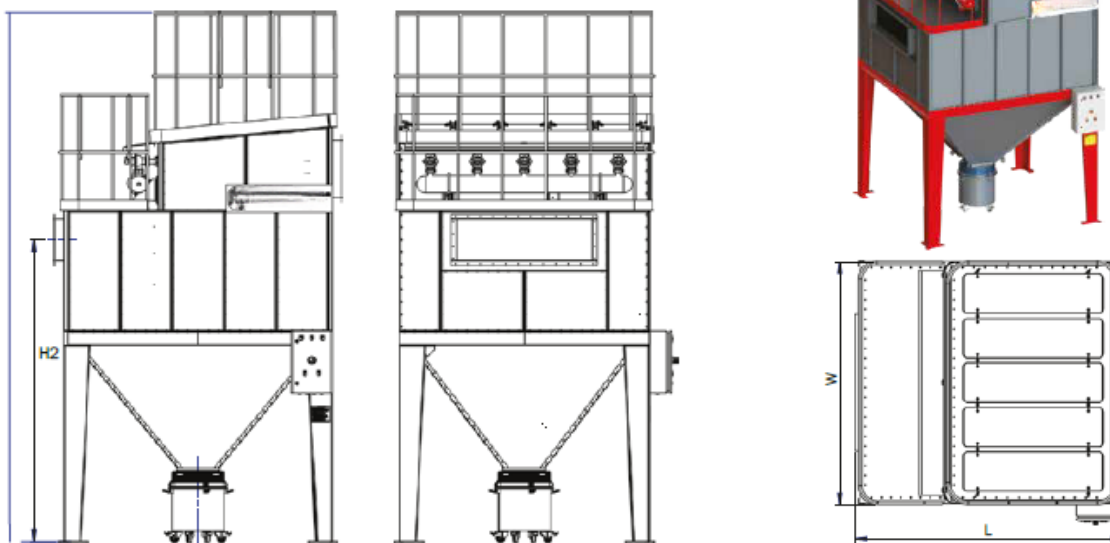


- The penetration of dust inside the filter is prevented and filter life is extended
- Less differential pressure is produced and required compressed air consumption for cleaning process is decreased
- Higher filtration efficiency is provided

PKF SERIES DUST COLLECTOR

JET-PULSE MODULAR CARTRIDGE - TECHNICAL DETAILS

The PKF Jet-Pulse Dust Collector is designed studiously by Bomaksan engineers. Data taking place in the tables is prepared for you to choose the PKF model best suited for your needs. Please contact with your Sales Representative to have further informations about our products.

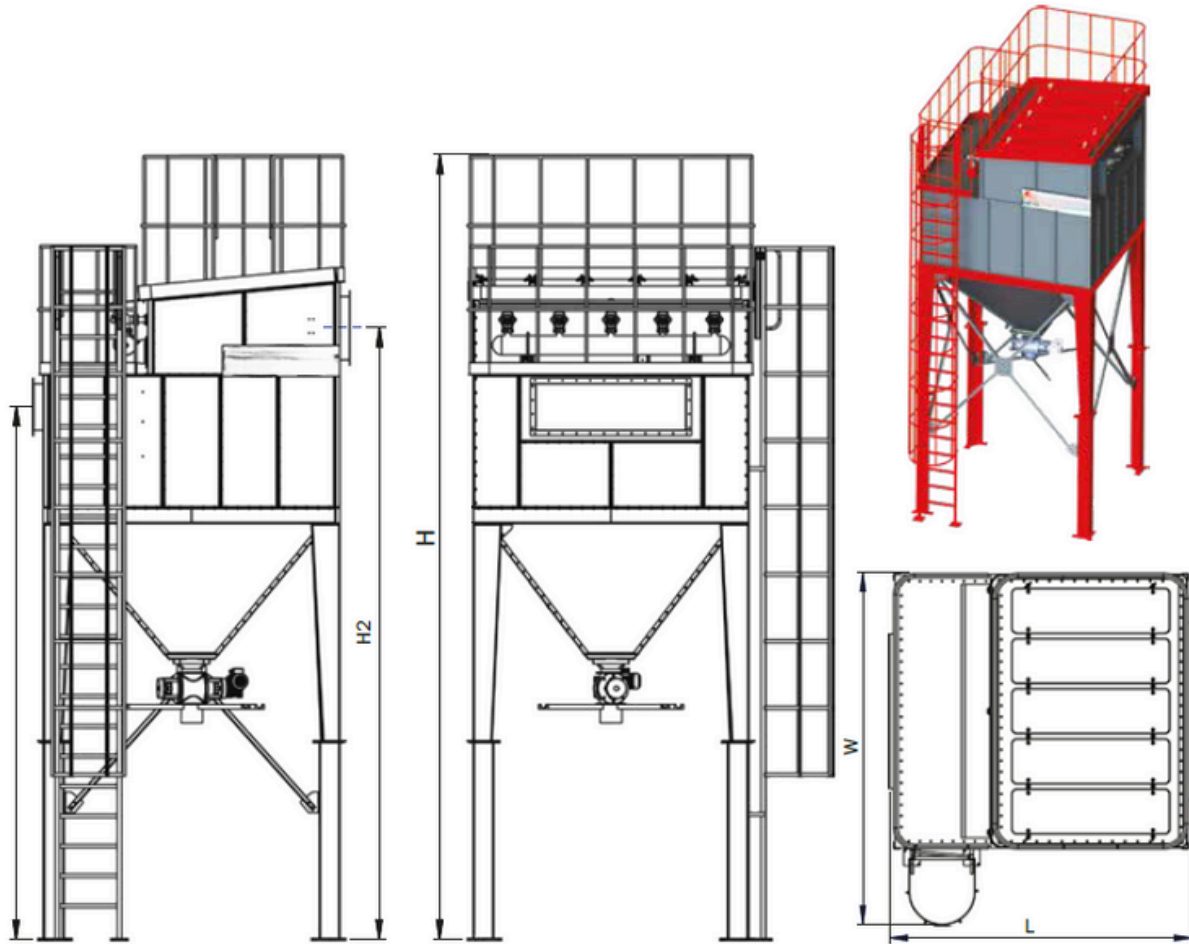


MODEL	PKF-4	PKF-6	PKF-9	PKF-12	PKF-15	PKF-18
Cartridge Filter (Unit)	4	6	9	12	15	18
Total Filtration Area (m2)	80	120	180	240	300	360
Filter Material	NanoBlend FR	NanoBlend FR	NanoBlend FR	NanoBlend FR	NanoBlend FR	NanoBlend FR
Fan Capacity (m3/h)	2.000-5.000	3.000-7.500	4.500-11.000	6.000-15.000	7.500-19.000	9.000-22.500
Filtration Velocity (m3/m2/h)	0,42-1,05	0,42-1,05	0,42-1,02	0,42-1,05	0,42-1,05	0,42-1,04
Pulse - Valve (Type - Unit)	1 1/2" - 2	1 1/2" - 3	1 1/2" - 5	1 1/2" - 6	1 1/2" - 8	1 1/2" - 9
Compressed Air Req. (Bar)	4-6	4-6	4-6	4-6	4-6	4-6
Power Supply (V ve Hz)	350V-50Hz	350V-50Hz	350V-50Hz	350V-50Hz	350V-50Hz	350V-50Hz
Operating Temperature (oC)	0/80 Dry Air	0/80 Dry Air	0/80 Dry Air	0/80 Dry Air	0/80 Dry Air	0/80 Dry Air
Cabin Comp. Strenght (Pa)	Max. 5000	Max. 5000	Max. 5000	Max. 5000	Max. 5000	Max. 5000
DIMENSIONS	PKF-4	PKF-6	PKF-9	PKF-12	PKF-15	PKF-18
Width (W) (mm)	1.360	1.650	1.650	2.130	2.544	2.970
Length (L) (mm)	1.750	2.070	2.470	2.970	2.930	3.120
Height (H) (mm)	3.570	4.315	4.657	4.770	5.050	5.100
Dirty Inlet Height (H1) (mm)	1.650	2.260	2.545	2.545	2.750	2.750
Dirty Air Inlet Dimension (mm)	830x300	1.000x400	1.200x450	1.200x500	1.400x600	1.500x600

Interfilter reserves the right to change or modify the details in the list at any time.

PKF SERIES DUST COLLECTOR

JET-PULSE MODULAR CARTRIDGE - TECHNICAL DETAILS



DIMENSIONS	PKF-4	PKF-6	PKF-9	PKF-12	PKF-15	PKF-18
Width (W) (mm)	1.790	1.850	2.250	2.740	2.750	2.750
Length (L) (mm)	1.946	2.260	2.260	2.800	3.130	3.730
Height (H) (mm)	5.700	6.000	6.290	6.490	6.715	6.760
Dirty Inlet Height (H1) (mm)	3.800	4.000	4.200	4.260	4.430	4.430
Dirty Air Inlet Dimension (mm)	830x300	1.000x400	1.200x450	1.400x500	1.400x600	1.500x600

Interfilter reserves the right to change or modify the details in the list at any time.

MODULAR SYSTEM INSTALLATION

