

# PLTF SERIES FILTER UNIT

## JET-PULSE PLEATED BAG HOUSE

### ECONOMICAL

PLTF Jet-Pulse Pleated Bag House Dust Collectors are much economical than traditional Bag House Filters. The main reason is Pleated Bag Filter Units requires much less space than Regular Bag Filters.

### FLEXIBLE

PLTF Jet-Pulse Pleated Bag House Dust Collectors can be customised depending on your facility requirements. Interfilter engineers provide solutions to all kind of limitations.

### DURABLE & LEAK-PROOF

Side and upper doors of cabin, makeup profile, chassis and carrying legs are produced with sufficient plate thickness and leak-proof is ensured by press inflection unifying with a nut.

### ADVANCED FILTRATION

PLTF Jet-Pulse Pleated Bag House Dust Collectors provides supreme filtration efficiency when it is compared with traditional bag filters.

### AUTO CLEANSING SYSTEM

Thanks to it's high efficient automatic cleaning system designed by Interfilter engineers as part of an R&D project of TUBITAK, while the consumption of compressed air is decreasing, the life and performance of filters increases.

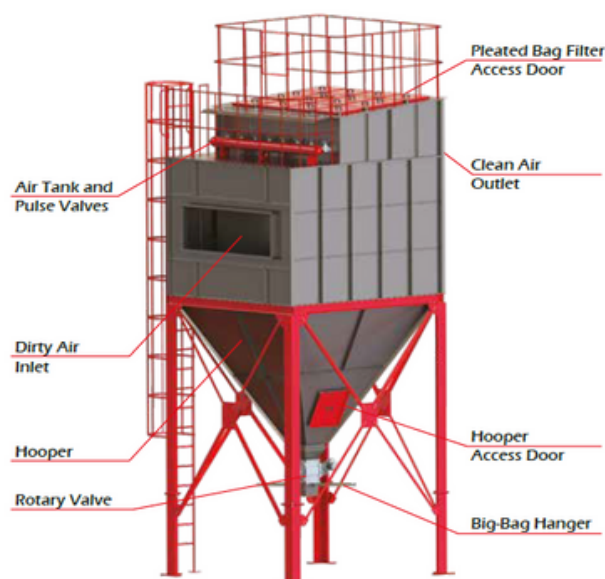
### EASY MAINTENANCE

The PLTF Jet-Pulse Pleated Bag Houses decreases your time and labor expenses up to 50% due to its well-engineered pleated bag filters which contains nozzle and cages inside.



### APPLICATIONS

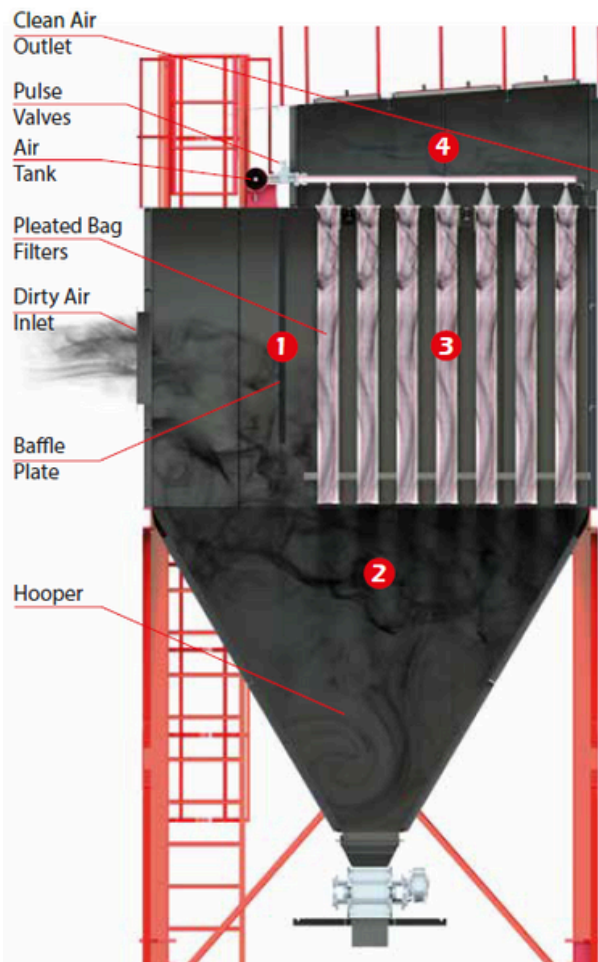
- Cement
- Foundry
- Pharmaceutical
- Powder Coating
- Food & Beverage
- Metal Working
- Chemical
- Ceramic/Glass



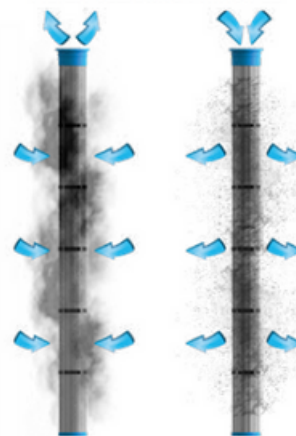
# PLTF SERIES FILTER UNIT

JET-PULSE PLEATED BAG HOUSE

## HOW IT WORKS?

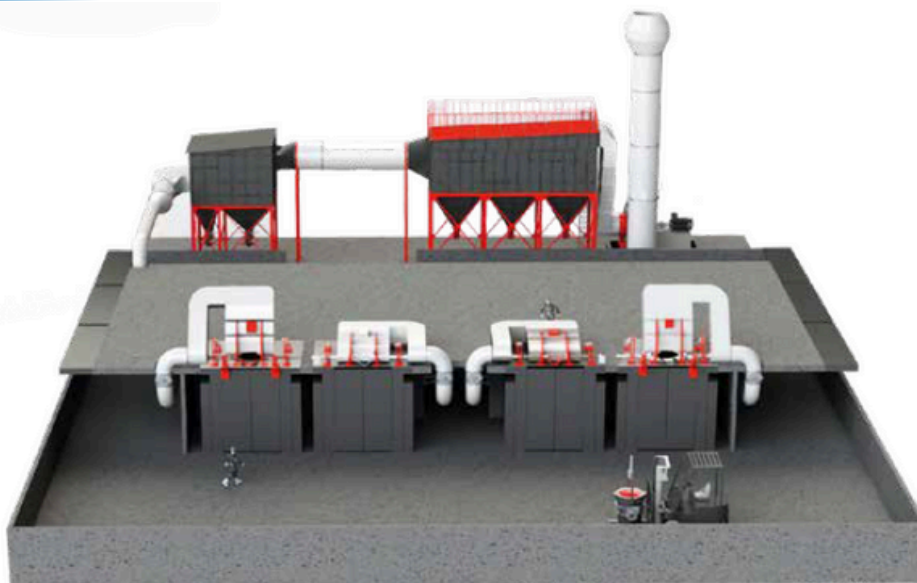


### FILTER CLEANING PRINCIPLE



- 1** Heavy particles carried by dirty air (such as spark, big and abrasive particles and so on) are directed to bunker via flapper.
- 2** Light particles in dirty air rise in filter cabin and are hold by cartridge filter.
- 3** Pleated bag filters are cleaned by pulse valves with compressed air, after differential pressure sensitive pulse valve controller detects the pollution level of filters.
- 4** Clean air coming from cartridge filters is released to indoor or atmosphere.

## SAMPLE INSTALLATION



# PLTF SERIES FILTER UNIT

## JET-PULSE PLEATED BAG HOUSE

### ADVANTAGES OF PLEATED BAG HOUSES



Requires much less space



Higher filter life time



Consumes less compressed air and energy



Makes maintenance much easier

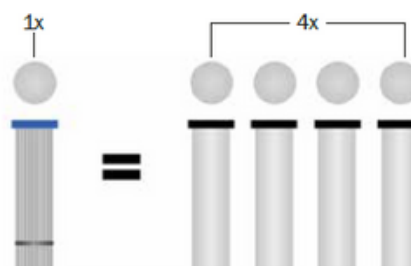
#### Cosumes Less Energy

- Pleated Bag filters have the same filtration area of 4 conventional bag filters(at same height). This advancement provide less compressed air and energy consumptions.



#### Requires Less Space

- Requires much less space with the same filtration area comparing to conventional bag house filters.
- Best choice for company who need more spaces for production



#### Higher Life Time

- Because of advanced surface filtration technology, their filter life is much higher comparing needle felt bag filters.
- Less replacement and maintenance requirement allows you to stop less and produce more.

#### Faster Maintenance

- Pleated bag filters can be replaced 6 times faster comparing the conventional bag filters due to the fact that the number of pleated bag filter per bag house is much less than bag filters and they have a special design which allows you to remove and install them faster.

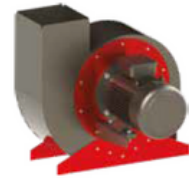
	CONVENTIONAL BAG FILTERS	PLEATED BAG FILTERS
<b>Filter Height</b>	Max. 8 m	Max. 2 m
<b>Filtration Area</b>	Small	2-3 Times Higher
<b>Filter Life Time</b>	Acceptable	Perfect
<b>Installing / Maintenance Cost</b>	High	Low
<b>Leak / Abrassion</b>	Can Occur	Leak-proof
<b>Emmision Level</b>	High	Low
<b>Power Consumption</b>	High	Low
<b>Comp. Air Requirement</b>	5-6 L / m2	3-4 L / filter
<b>Air Premeability</b>	Acceptable	Perfect
<b>Pressure Drop</b>	High	Low
<b>Initial Bag House Investment</b>	High	Low

# PLTF SERIES FILTER UNIT

## JET-PULSE PLEATED BAG HOUSE - ACCESSORIES

### Radical fan

Targeted to satisfy requested flow and pressure, centrifuge type, conforming the standards and with its' direct drive motor its' produced to work quite and vibration free. Fan motor are made by steel as standard and balanced dynamically and statically on specialized plants.



### Pleated bag filters

High efficient pleated bag filters are produced by 100% non-woven polyester and can have surface treatments depending on the application.



### Pulse-valve and air tank

Pulse Valves are made by aluminum cast and 1½" sized. They perform with 24V DC standard voltage. Air tank is produced conforming to compressed container technique and adequate to store the air between two valves.



### Pulse-valve controller

It analyzes differential pressure occurs due to pollution of filters digitally and controls pulse valves. Covered with IP 65 class, made by ABS, water- and dust-proof case.



### Fan control panel

The panel containing thermal switch controlling ventilator engine, contactor, engine protection relay, working/warning lights.



### Rotary valve

In case of high dust load, Rotary Valves removes the dust from the hooper continuously. It is made from casted body, has outboard bearings, motor and reductor group.



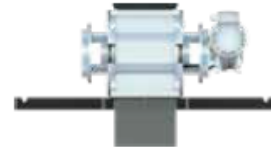
# PLTF SERIES FILTER UNIT

JET-PULSE PLEATED BAG HOUSE - ACCESSORIES

## OPTIONAL ACCESSORIES

### Big-bag hang

Dust coming from rotary valve needed to be stored in a storage. Big Bags are one of the most commonly used storage type. Big Bag hangs are the equipment which holds big bags steady. Big Bag hangs are designed to hold big bags in the most effective way.



### Frequency inverter

It is a high-efficiency, frequency inverter for manipulating by increasing or decreasing the frequency of the radial fan.



### Silencer

In order to prevent air noise from the fan, backstage type is produced in suitable capacities. It can be manufactured specially.



## EX-PROOF ACCESSORIES

### Explosion vent

ATEX certificated explosion door is used, which is produced by stainless steel.



### Pilot box and ex-proof coils

Remote box keep electrical equipments of pulse valves out from explosive and dangerous areas. It also prevents electronic equipments from harsh environment.



### Ex-proof fan & motor

ATEX certificated ex-proof motor and fan are used, which are suitable for different capacity requirements



# PLEATED BAG FILTER

## PLTF SERIES JET-PULSE PLEATED BAG HOUSE FILTER UNIT

- According to DIN EN 60335-2-69 standards, it has a filtration efficiency up to 99,9%.
- Higher filtration area with the same volume.
- Extended use without losing filtration efficiency.

In the PLTF Jet-pulse Pleated Bag House Units, highly efficient 100% non-woven polyester pleated bag fillers are used. With its' superior pleating technique it's guaranteed the pleating sizes have been equal and better filter cleaning is ensured.

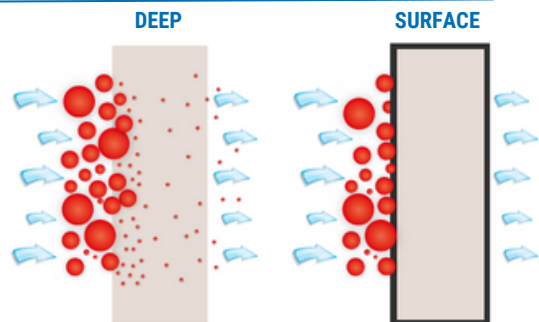
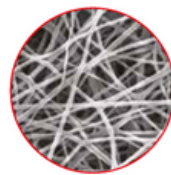
Interfilter engineers offer the most suitable filter material for all execution and dust types. Some filter materials considering factors such as density of dust, humidity proportion, if the dust has a potential to be loaded statically and so on are as follows;

- polyMIGHT 55: %100 spunbond non-woven polyester
- polyMIGHT HO 55: polyMIGHT 55 + oleo & hydrophobic impregnation
- polyMIGHT ALU: polyMIGHT 55 + AL coating (Antistatic)
- polyMIGHT PTFE 65: polyMIGHT 55 + thermal bonded ePTFE membrane
- polyMIGHT ALU PTFE: polyMIGHT ALU + thermal bonded ePTFE membrane



## SURFACE FILTRATION

On the contrary to traditional filters, filters made by non-woven polyester performs the filtration not in the filter but on the surface. Therefore;



- The penetration of dust inside the filter is prevented and filter life is extended
- Less differential pressure is produced and required compressed air consumption for cleaning process is decreased
- Higher filtration efficiency is provided