

NW80

Bag filter with Nanowave synthetic filter medium, filter class ISO ePM1-60%

APPLICATIONS

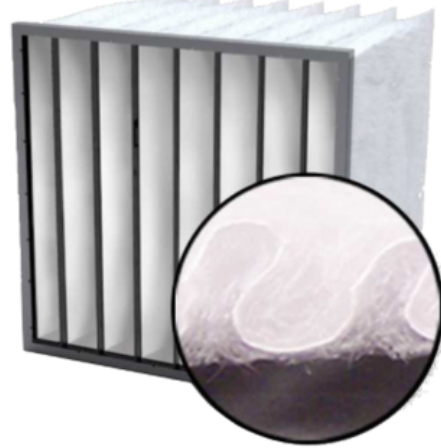
- Fine filtration for air handling units and pre-filtration for (H)EPA filters

BENEFITS

- Very low initial resistance
- High dust-holding capacity, long service life
- Low energy consumption
- Self-supporting medium
- Eurovent certified through the manufacturer Deltrian

SPECIFICATIONS

- Medium: Nanowave synthetic
- Frame: Steel, also available in wood and plastic
- Recommended final resistance: 250 Pa
- Maximum continuous temperature: 70°C
- Maximum relative humidity: 100%



| ARTICLE NO. | DESCRIPTION | WIDTH (A) MM | HEIGHT (B) MM | LENGTH (C) MM | NUMBER OF POCKETS | CLASS ISO 16890 | FLOW RATE M3/U | ΔP INITIAL | KWH/J 4/21-2018 |
|-------------|------------------------------|--------------|---------------|---------------|-------------------|-----------------|----------------|------------|-----------------|
| 18453 | NW80 592x592x500, 8p | 592 | 592 | 500 | 8 | ePM1-60% | 3400 | 100 | 1396 |
| 18460 | NW80 288x592x500, 4p | 288 | 592 | 500 | 4 | ePM1-60% | 1700 | 100 | 1396 |
| 18493 | NW80 490x592x500, 6p | 490 | 592 | 500 | 6 | ePM1-60% | 2800 | 100 | 1396 |
| 18492 | NW80 288x288x500, 4p | 288 | 288 | 500 | 4 | ePM1-60% | 850 | 100 | 1396 |
| 18447 | NW80 592x288x500, 8p | 592 | 288 | 500 | 8 | ePM1-60% | 1700 | 100 | 1396 |
| 18465 | NW80 592x490x500, 8p | 592 | 490 | 500 | 8 | ePM1-60% | 2800 | 100 | 1396 |
| 18410 | NW80 592x592x600, 8p | 592 | 592 | 600 | 8 | ePM1-60% | 3400 | 92 | 1295 |
| 18411 | NW80 288x592x600, 4p | 288 | 592 | 600 | 4 | ePM1-60% | 1700 | 92 | 1295 |
| 18412 | NW80 490x592x600, 6p | 490 | 592 | 600 | 6 | ePM1-60% | 2800 | 92 | 1295 |
| 18418 | NW80 288x288x600, 4p | 288 | 288 | 600 | 4 | ePM1-60% | 850 | 92 | 1295 |
| 18420 | NW80 592x288x600, 8p | 592 | 288 | 600 | 8 | ePM1-60% | 1700 | 92 | 1295 |
| 18419 | NW80 592x490x600, 8p | 592 | 490 | 600 | 8 | ePM1-60% | 2800 | 92 | 1295 |
| | NW80 592x592x600, 10p | 592 | 592 | 600 | 10 | ePM1-60% | 3400 | 80 | 1047 |
| | NW80 288x592x600, 5p | 288 | 592 | 600 | 5 | ePM1-60% | 1700 | 80 | 1047 |
| | NW80 490x592x600, 8p | 490 | 592 | 600 | 8 | ePM1-60% | 2800 | 80 | 1047 |
| | NW80 288x288x600, 5p | 288 | 288 | 600 | 5 | ePM1-60% | 850 | 80 | 1047 |
| | NW80 592x288x600, 10p | 592 | 288 | 600 | 10 | ePM1-60% | 1700 | 80 | 1047 |
| | NW80 592x490x600, 10p | 592 | 490 | 600 | 10 | ePM1-60% | 2800 | 80 | 1047 |