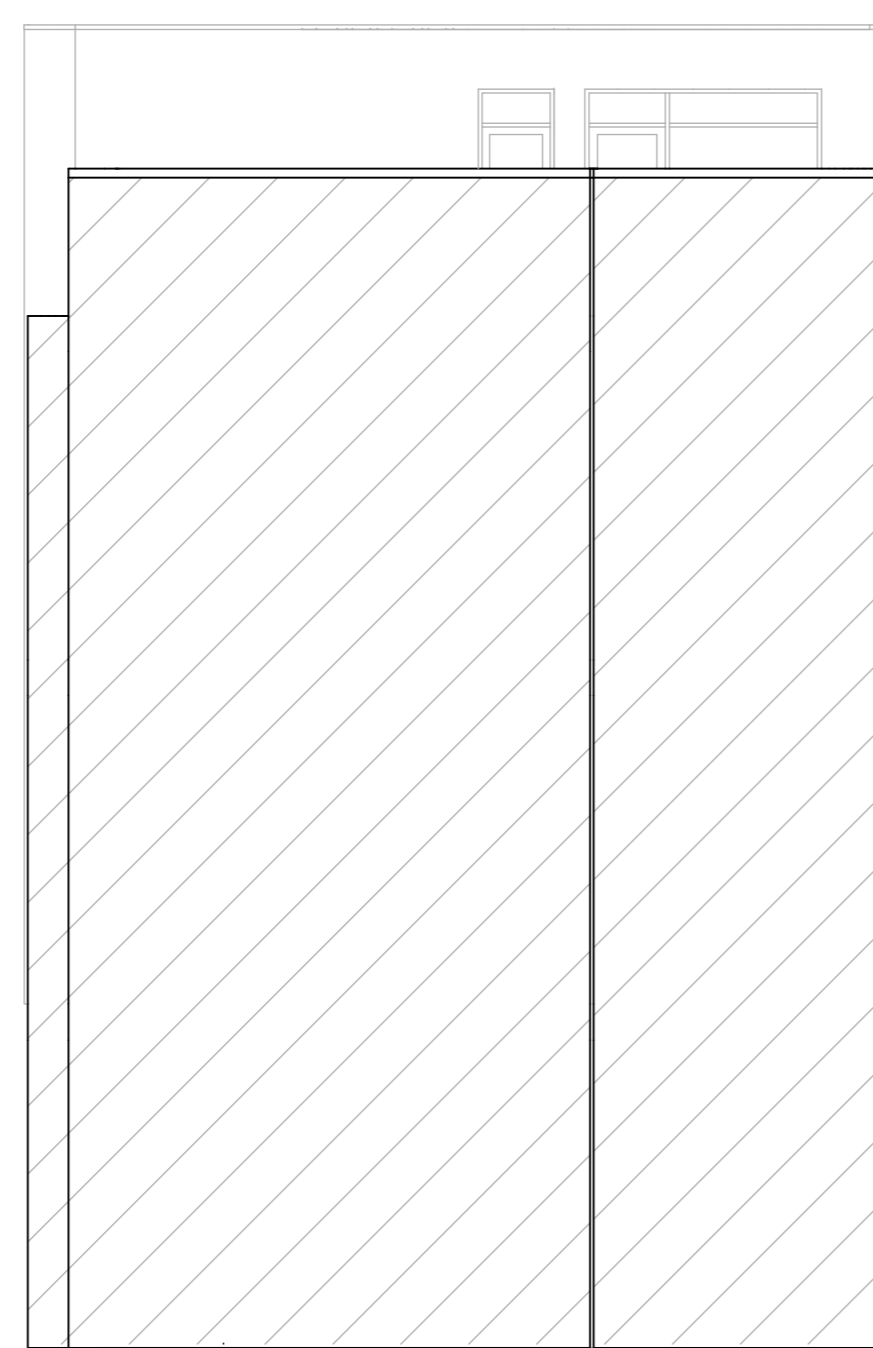
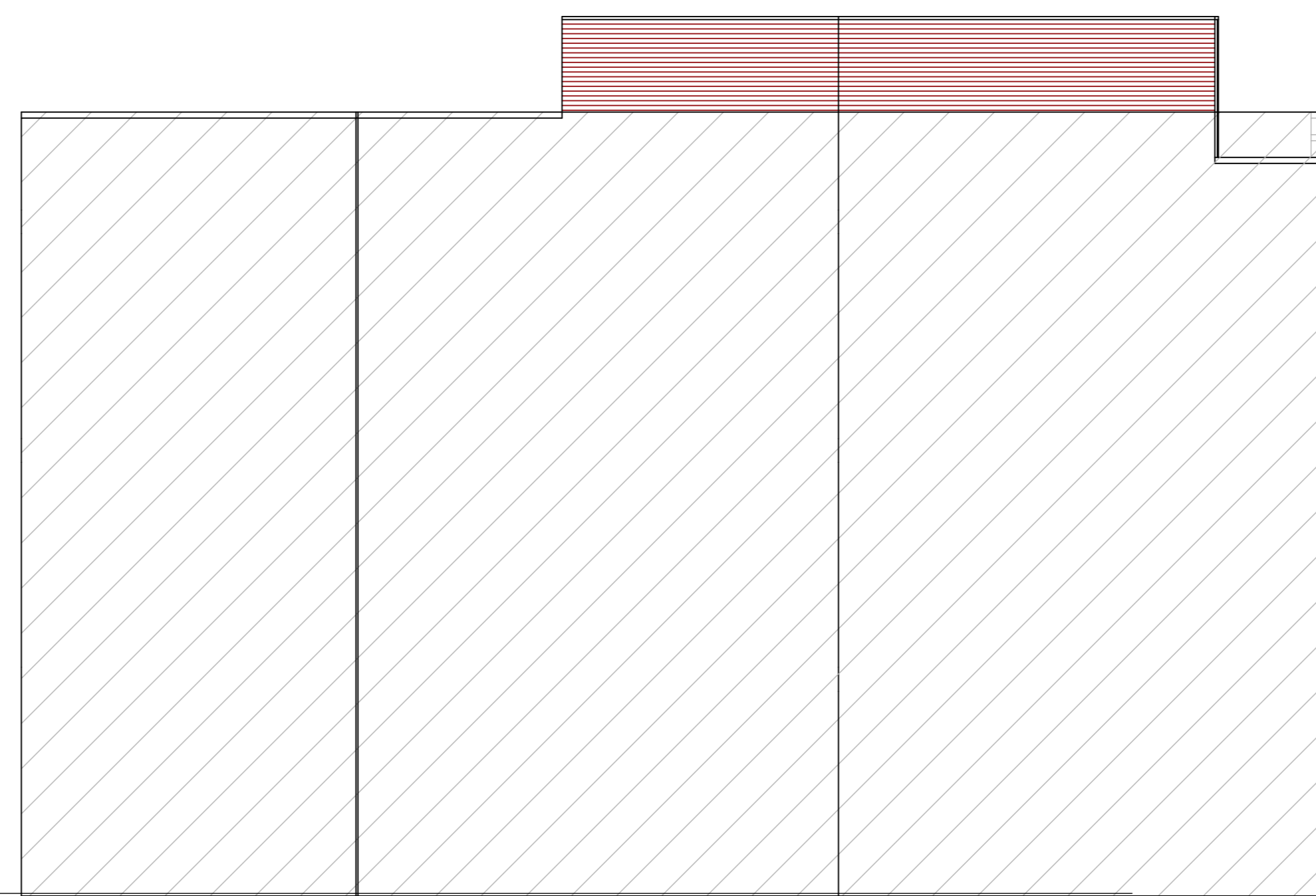




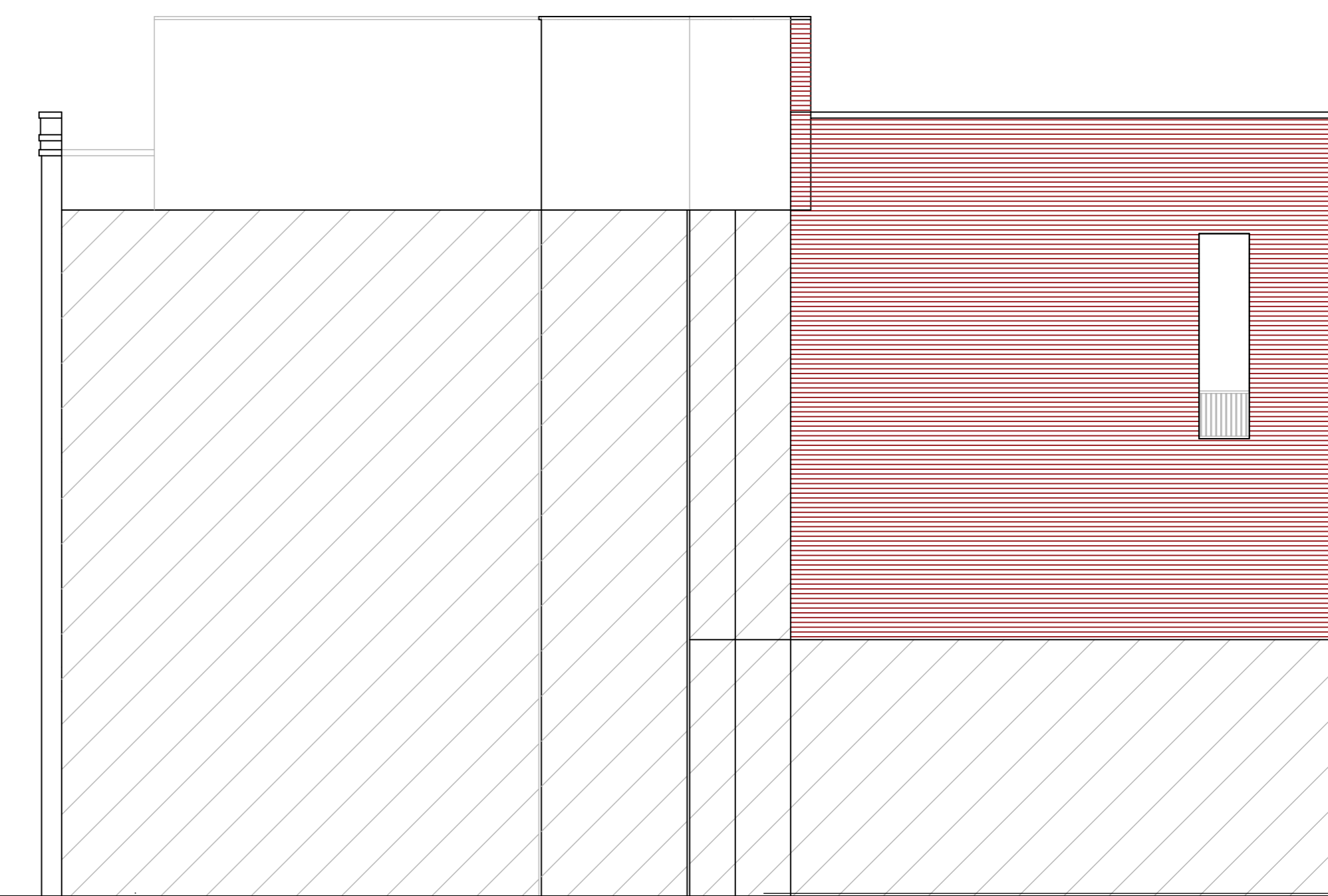
Voorgevel  
Nieuw



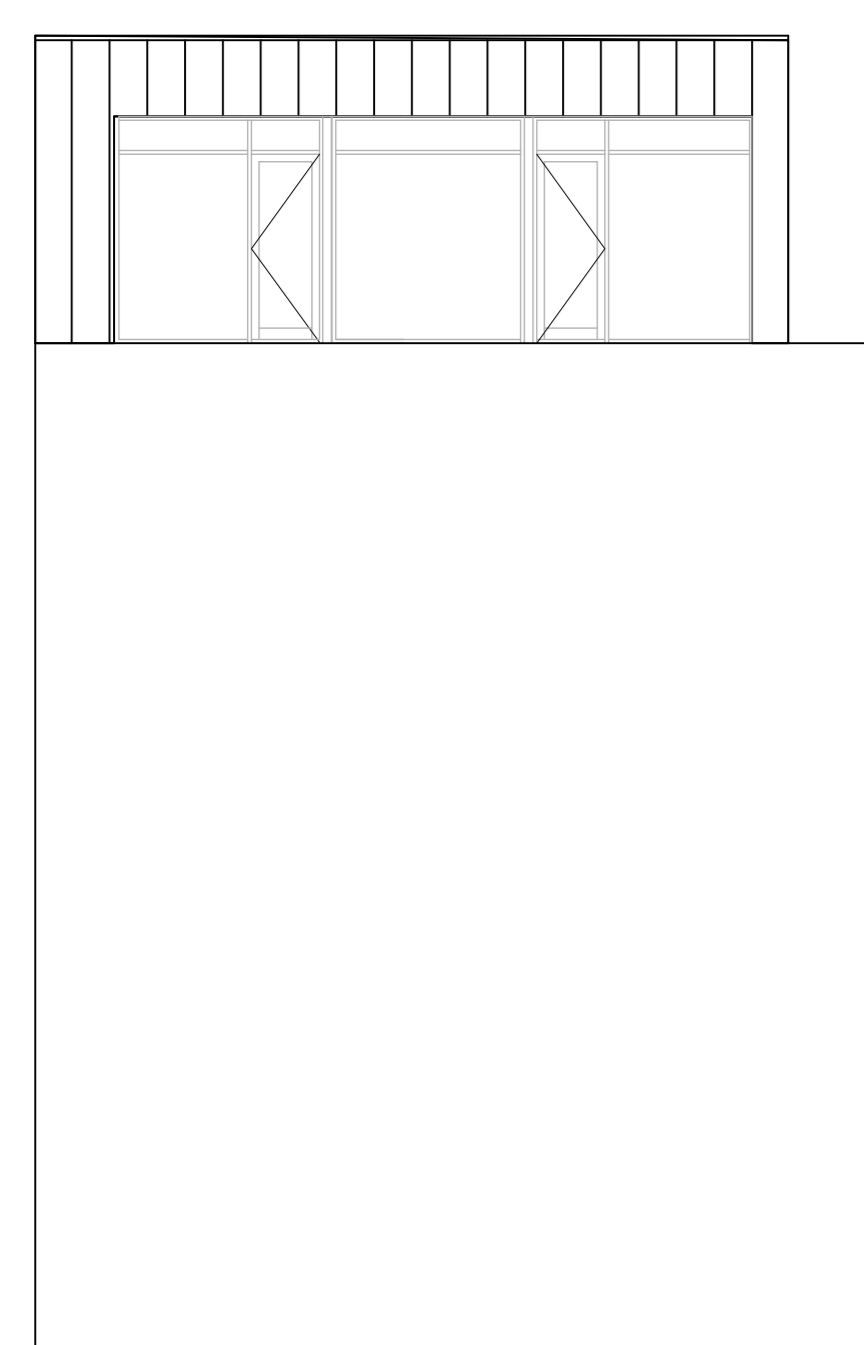
Achtergevel  
Nieuw



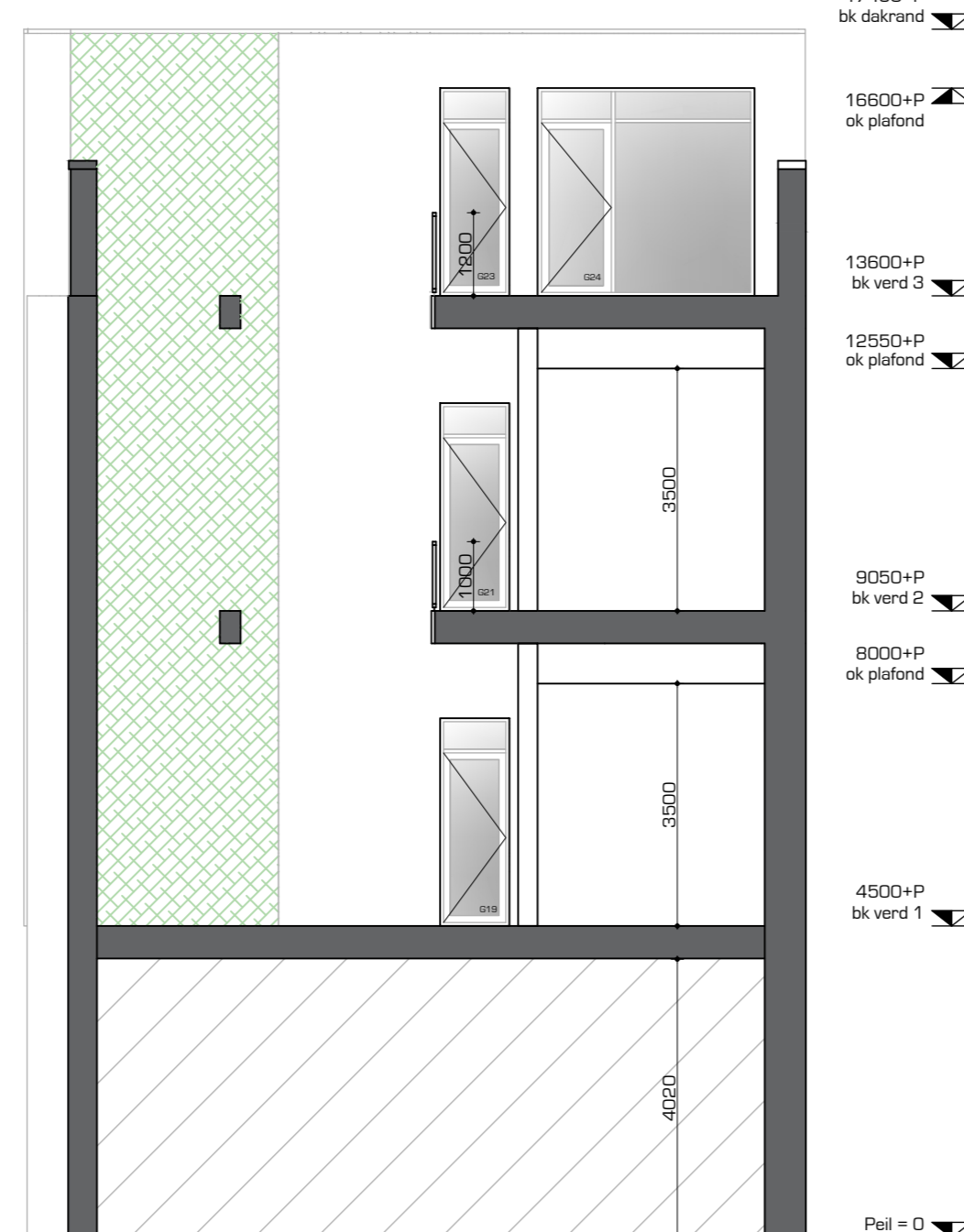
Linkergevel  
Nieuw



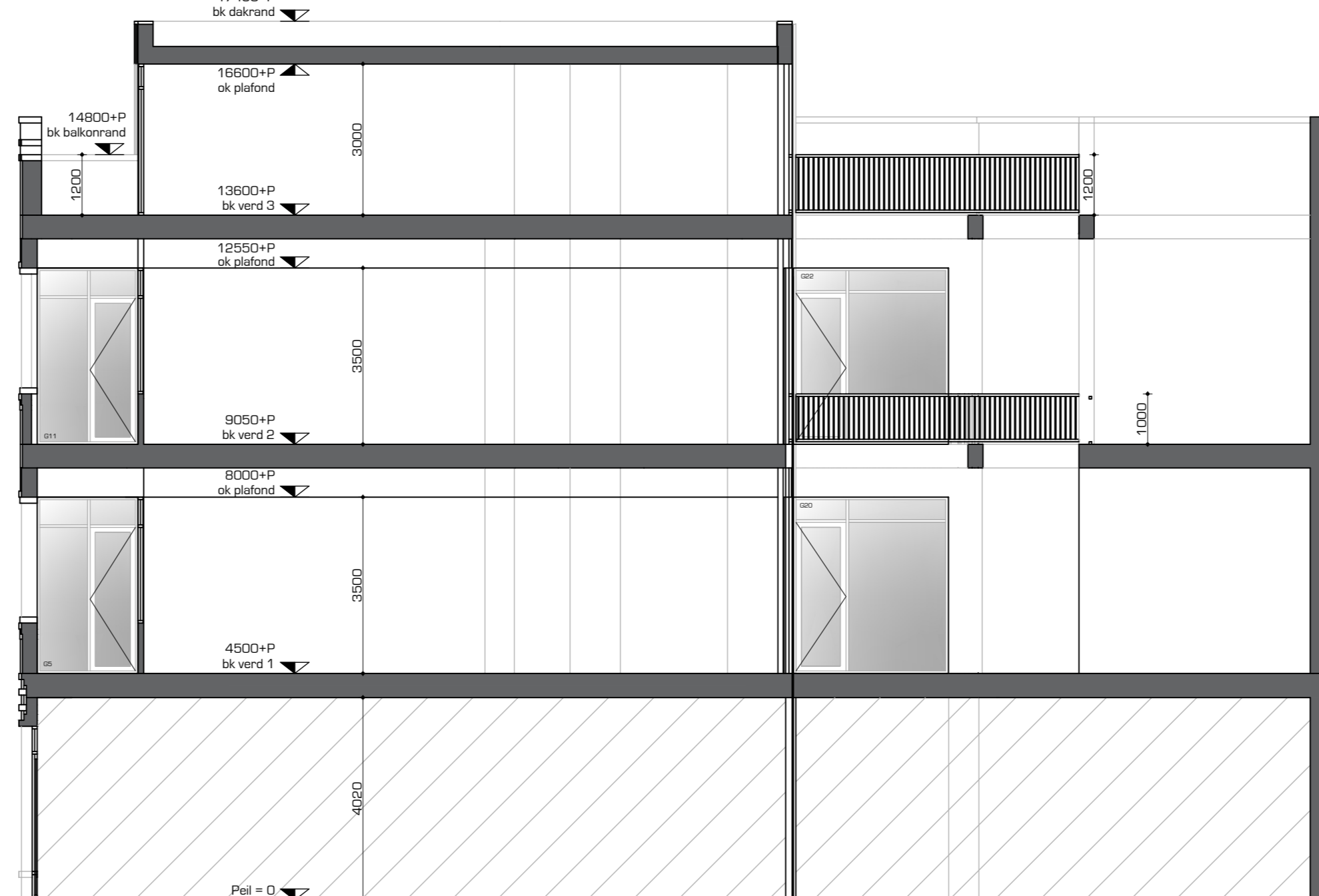
Rechtergevel  
Nieuw



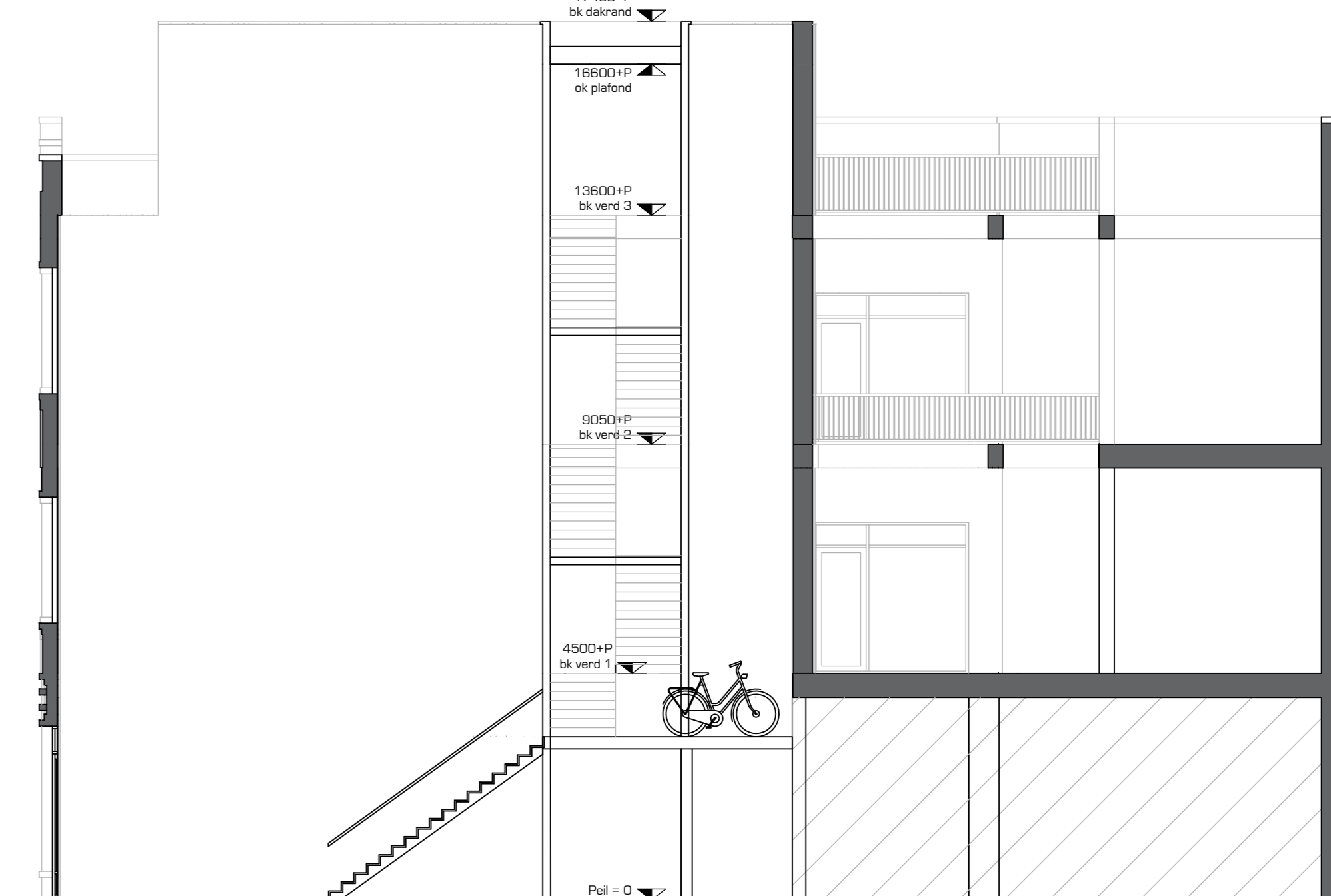
Voorgevel optopping  
Nieuw



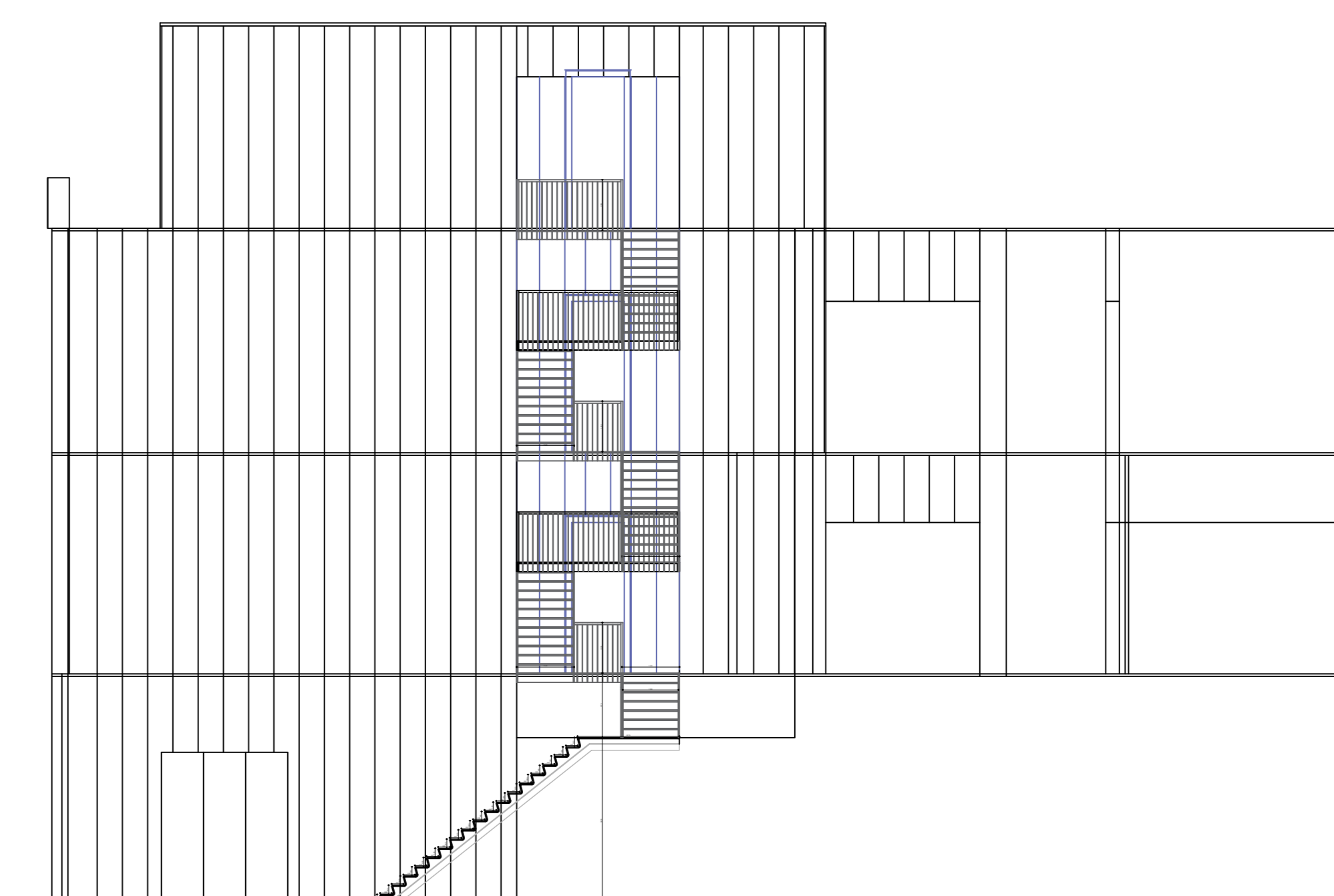
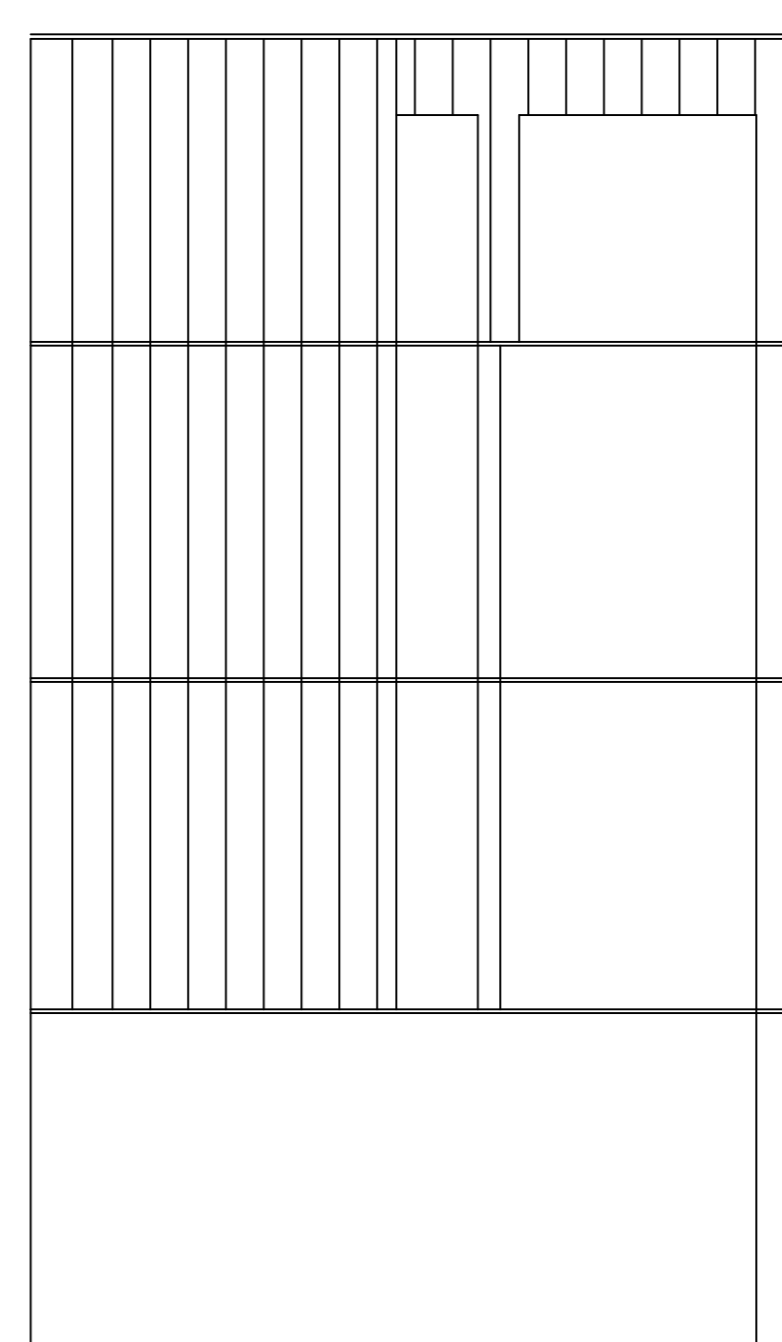
DRSN A-A  
Nieuw



DRSN B-B  
Nieuw



DRSN C-C  
Nieuw



ALLE CONSTRUCTIEONDERDELEN VOLGENS OPGAVE CONSTRUCTEUR  
ALLE MATEN TE CONTROLEREN DOOR AANNEMER

**GEVELS TBV TOOL OPLEVERING**

Opdrachtgever: **BHC Groep B.V.** Besteknr.:  
Projectnaam: **Pand aan de Rechtstraat 31 te Eindhoven** 23 februari 2026  
Adres: **Rechtstraat 31 - 5611 GM - Eindhoven** 1:100 - 1:50 PH

**BTTB HELMIG**  
BOUWTECHNISCH TEKENBUREAU

Ruiken 9 5648 HJ Eindhoven +31(0)40 6482095 +31(0)9 13101790  
www.bttbhelmig.nl #bttbhelmig

Projectnr: **200748** Tekening: **748 - W17** Versie: **A**